

# *Globalview Billiards*



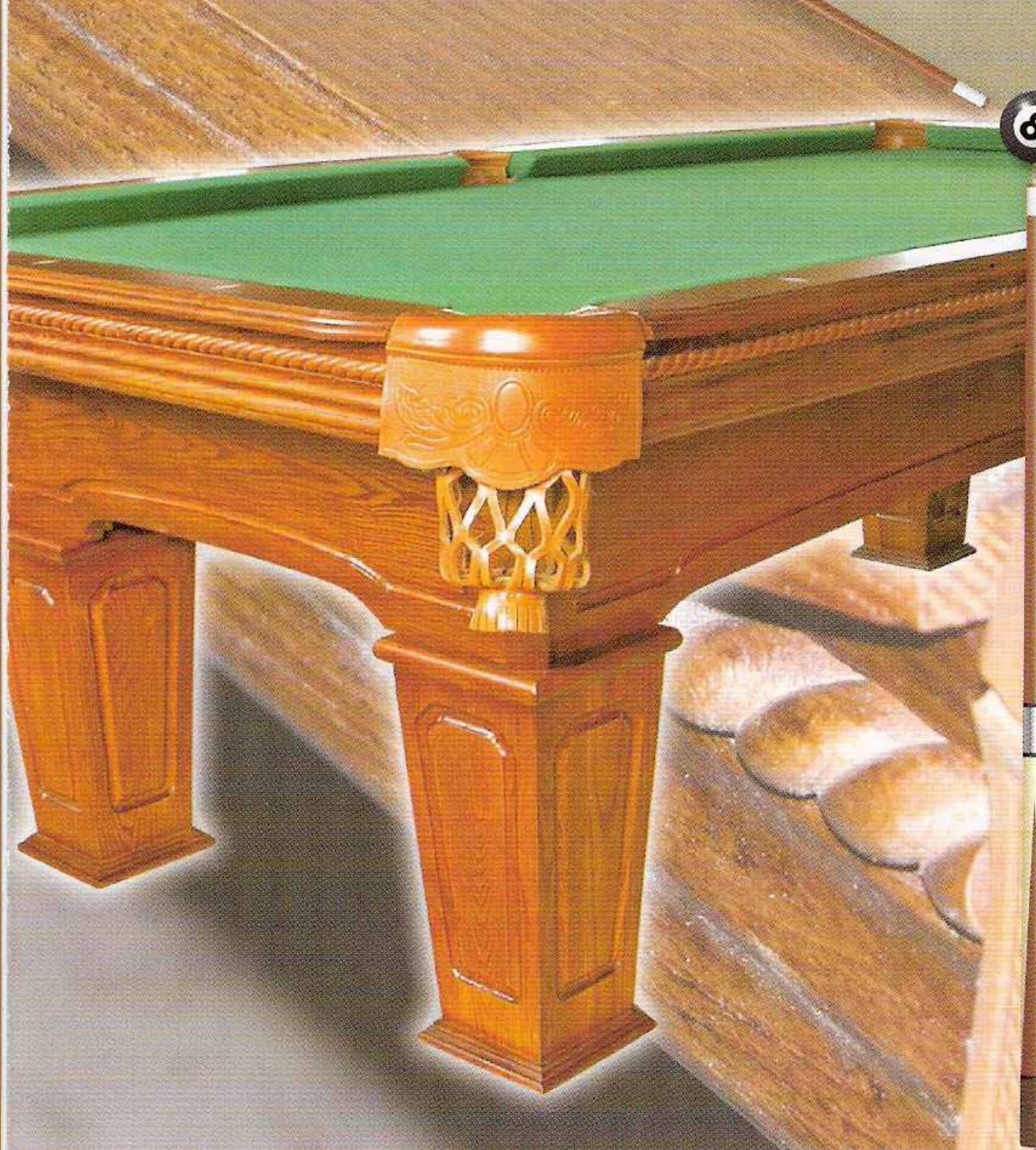


GLOBALVIEW BILLIARDS

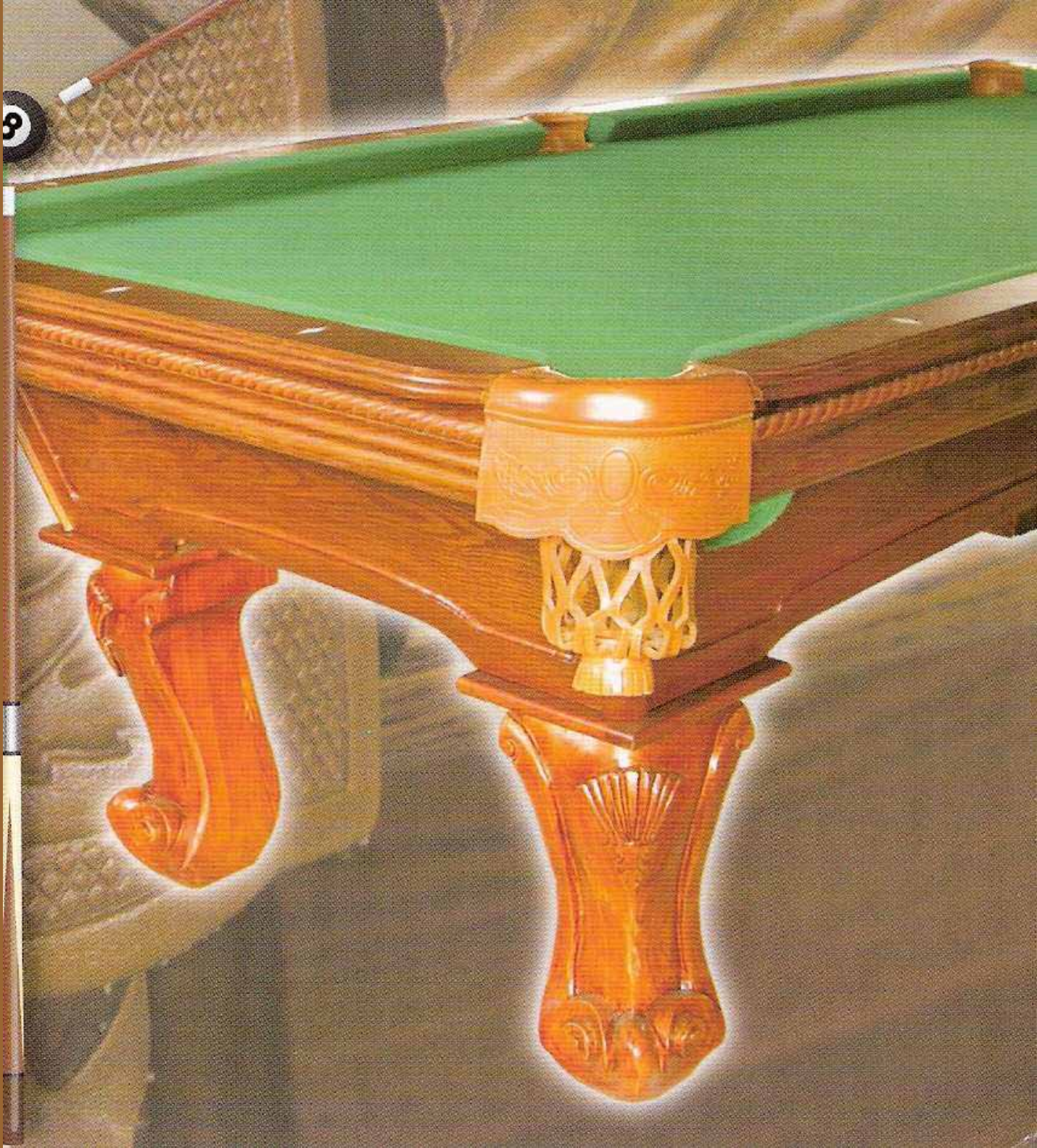


# *Globalview Billiard Tables*

- John Anthony
  - Sterling Crown
    - Nicholas Charles
      - Chateau Marie









*John Anthony  
tapered leg.  
Item# 801*



*Sterling  
Crown ball  
and claw leg.  
Item# 803*



*Nicholas Charles  
ram head leg.  
Item# 805*

<b>FEATURES</b>	<b>Globalview Billiards</b>	<b>Other Billiard manufacturer</b>
UV stabilized PU coats, protects table from dust and moisture, durable and wear resistant	Yes	No
Oversized rails, provides a much more comfortable playing field	Yes	No
Embossed leather pockets	Yes	No
Heavy duty bracing, solid steel and solid wood bracket	Yes	No
Split leveling board (patent pending), allows easy and convenient table installation in any room	Yes	No
Double reinforced table leg (patent pending)	Yes	No
Matrix frame (patent pending), 2 solid wood straight beams and 2 solid wood cross beams	Yes	No
Slate thickness, thicker slate provides a more smooth play	1"	Up to 3/4"
Construction quality hardware, minimum SAE grade 5 quality	Yes	No
Lifetime warranty	Yes	No



The solid steel corner bracket holding the aprons together is unaffected by temperature or humidity.



Sanding between each coat gives the look of a perfectly smooth to the touch finish.



Solid wood dual-double beam construction (patent pending) and split-leveling board (patent pending) completes the solid cabinet, which allows ease in mobility and numerous choices for table placement.

Natural rubber K-66 cushions provide the consistent bumper action expected throughout the industry.



Auto split-leveling slate pads (patent pending) bolt onto the frame, forming a cabinet of unmatched strength and stability.



The beautiful hand-crafted and elegantly embossed top complements durable and stylish leather pockets allowing years of trouble free play.



Solid wood rail blind with classic rope edge deco. Carefully hand stain and polish to the highest standard in the industry.



Top of the line UV resistant polyurethane coatings ensure the beauty of a wood finish that will last for generations.

The gorgeous hand-polished diamond sights complement the beautiful fine wood craftsmanship. Whether you are an amateur or professional, you will enjoy the precision diamond sights for optimum play.

An extra thick apron forms a cabinet of unsurpassed strength. Deep, bold routing gives the apron a simple, yet elegant look.

There are 3 styles of table leg to choose from: The John Anthony is a tapered leg, the Sterling Crown is a ball and claw leg, and the Nicholas Charles is a ram's head leg.

Permacoat® on all surfaces, seals and retains the wood's natural moisture which prevents warping and distortion due to humidity change.

The solid wood leg top directly anchors to the apron, providing superior strength and stability.





*The solid steel corner bracket holding the aprons together is unaffected by temperature or humidity.*



*The beautiful hand-crafted and elegantly embossed top complements durable and stylish leather pockets allowing years of trouble free play.*



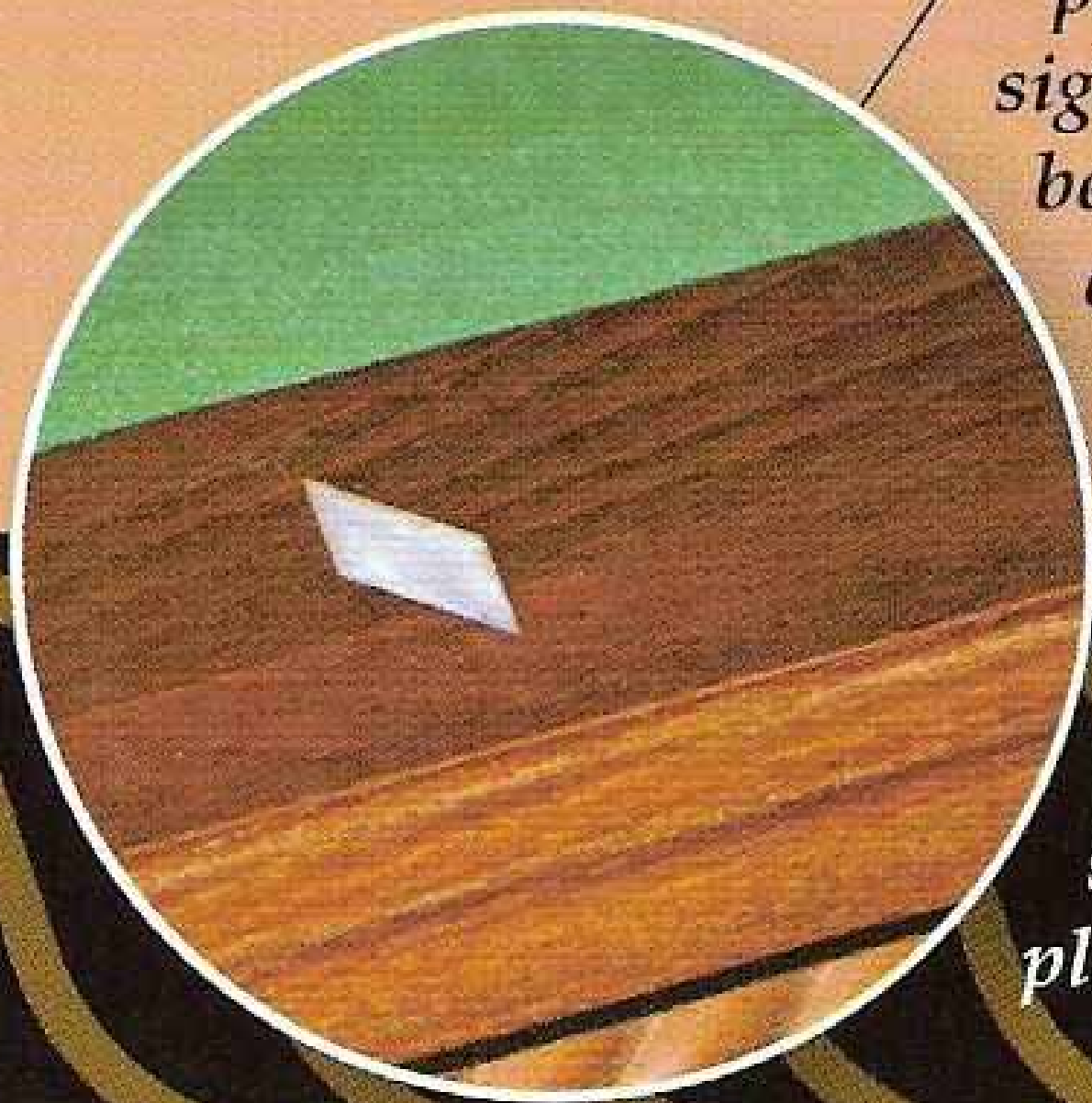
*Top of the line UV resistant polyurethane coatings ensure the beauty of a wood finish that will last for generations.*

*Th*

*Sanding between  
each coat gives the  
look of a perfectly  
smooth to the  
touch finish.*



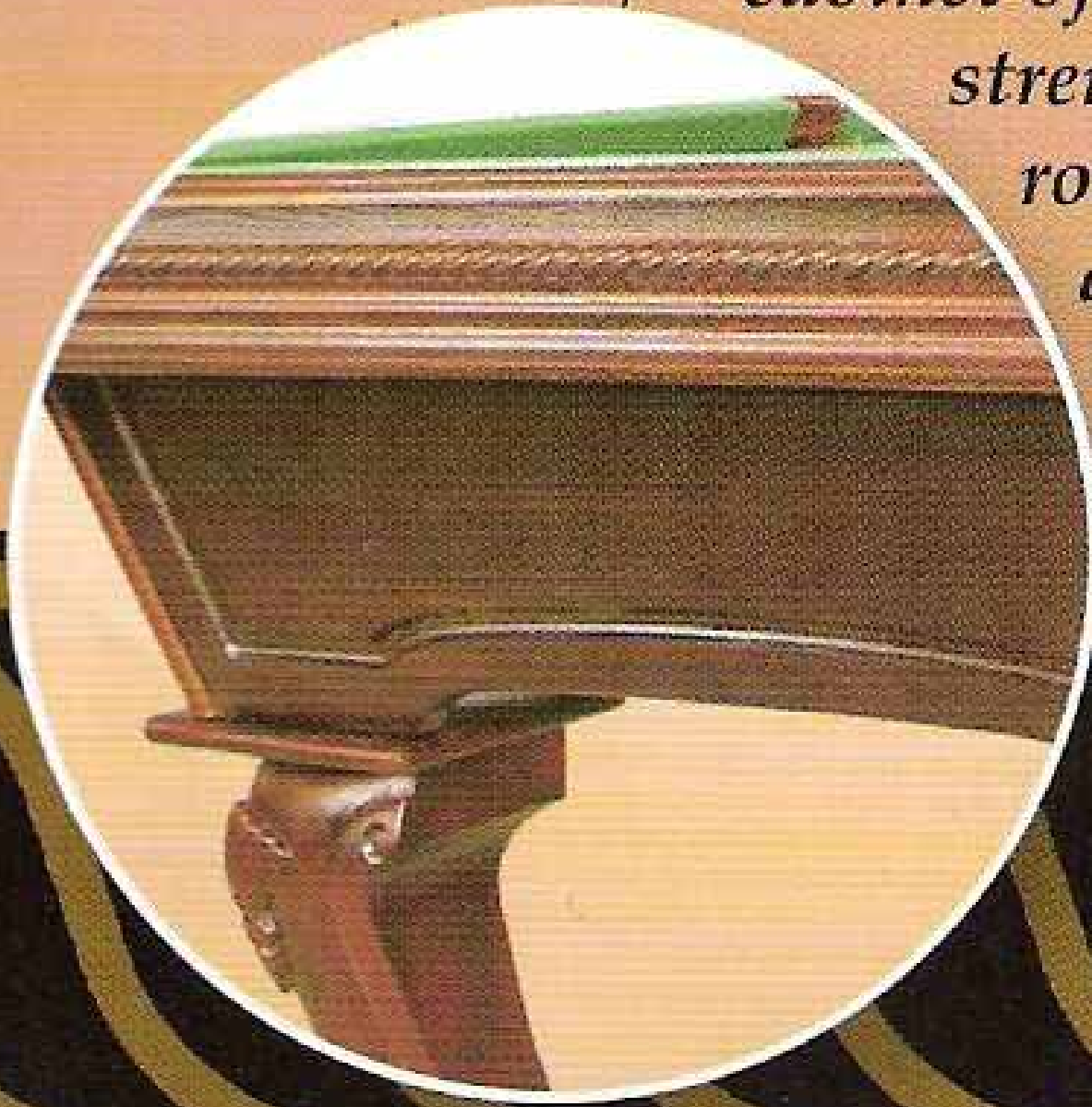
*Permacoat® on all surfaces, seals and retains the wood's natural moisture which prevents warping and distortion due to humidity change.*



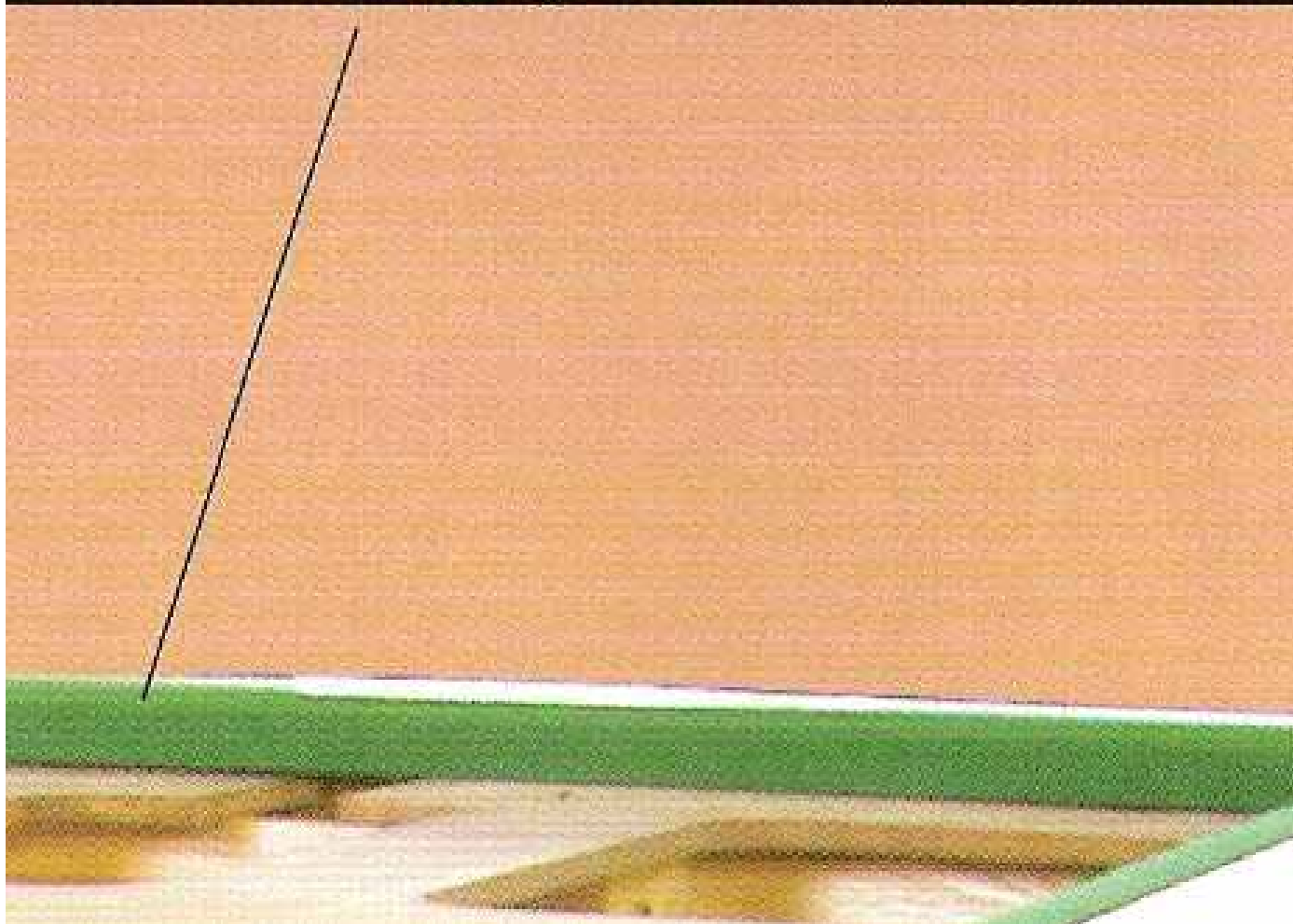
*The gorgeous hand-polished diamond sights complement the beautiful fine wood craftsmanship.*

*Whether you are an amateur or professional, you will enjoy the precision diamond sights for optimum play.*

*An extra thick apron forms a cabinet of unsurpassed strength. Deep, bold routing gives the apron a simple, yet elegant look.*



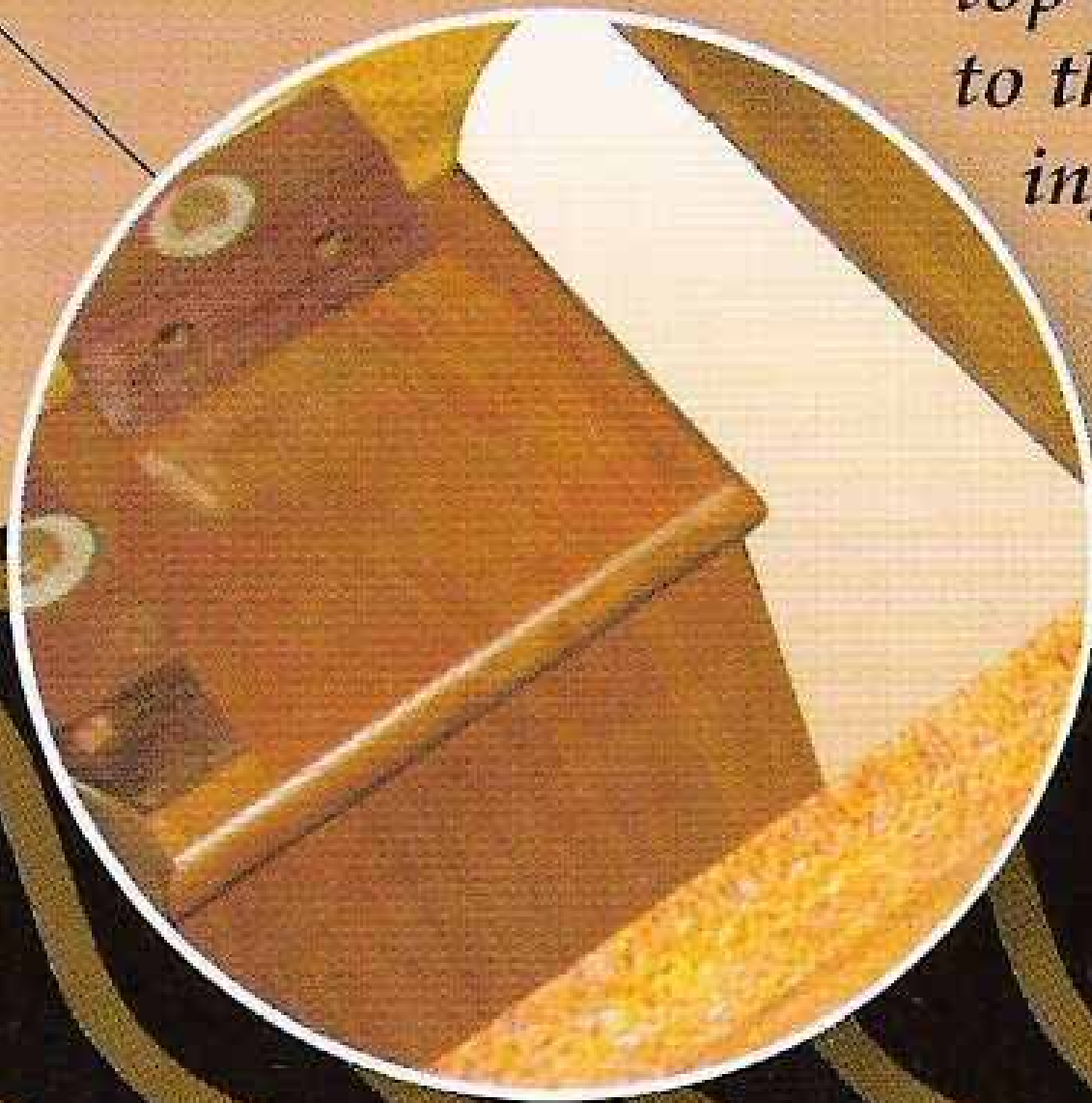
*Natural rubber K-66 cushions provide the consistent bumper action expected throughout the industry.*





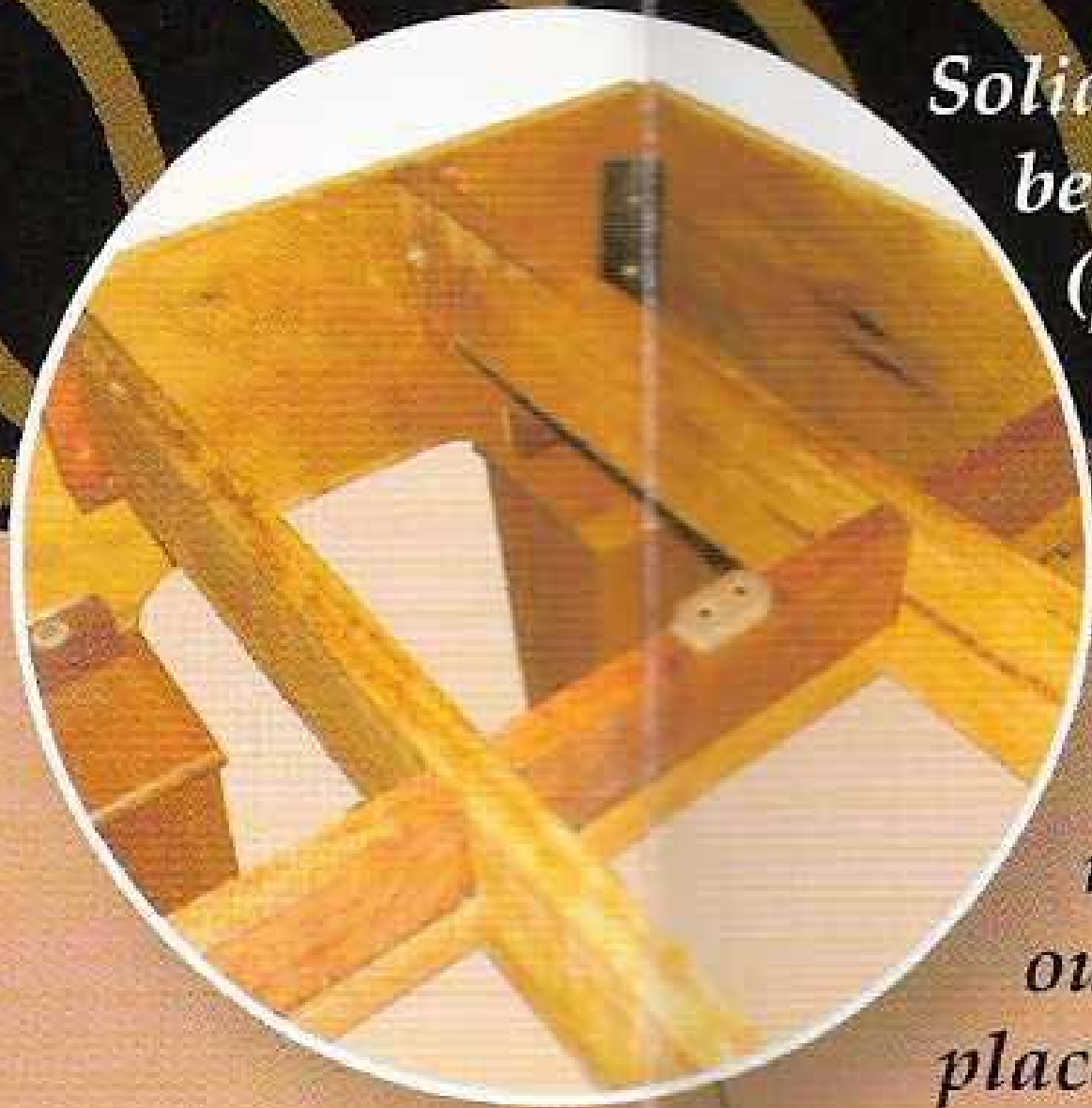
*Solid wood rail blind with classic rope edge déco. Carefully hand stain and polish to the highest standard in the industry*

*The solid wood leg  
top directly anchors  
to the apron, provid-  
ing superior  
strength and  
stability.*





*Auto split-leveling  
slate pads (patent  
pending) bolt onto  
the frame, form-  
ing a cabinet of  
unmatched  
strength and  
stability.*



*Solid wood dual-double  
beam construction  
(patent pending) and  
split-leveling board  
(patent pending)*

*completes the solid  
cabinet, which  
allows ease in  
mobility and numer-  
ous choices for table  
placement.*

# LIFETIME GUARANTEE

**GLOBALVIEW BILLIARDS HAS A LIFETIME GUARANTEE TO THE ORIGINAL PURCHASER AGAINST DEFECTS IN MATERIAL AND WORKMANSHIP PROVIDED INSTALLATION BY AN AUTHORIZED DEALER OR REPRESENTATIVE. CLOTH AND POCKETS ARE NOT COVERED UNDER THIS GUARANTEE.**

Parts returned for warranty service are to be shipped pre-paid. Those parts found to be defective will be repaired or replaced and returned pre-paid by conventional surface freight carrier. This guarantee does not imply replacement of the entire pool table but does cover the replacement or repair of such parts that may prove defective. All claims must be made through an Authorized Dealer or Representative.

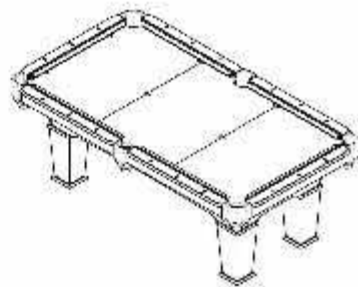
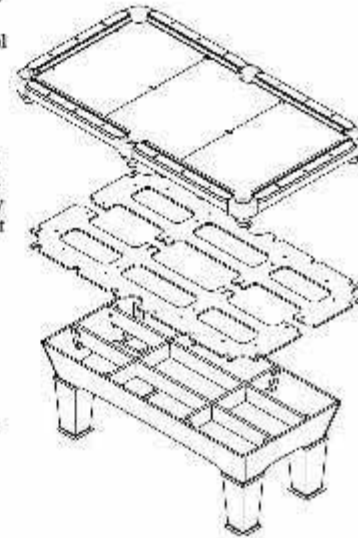
Replacement or repair of defective parts shall constitute complete fulfillment of all obligations of GLOBALVIEW BILLIARDS with respect to the product guarantee. GLOBALVIEW BILLIARDS shall under no circumstances incur liabilities for any consequential damages arising out of any condition of the pool table, including, but not limited to, damages arising from the loss of use of the product.

GLOBALVIEW BILLIARDS reserves the right to improve the product through changes in design or material without obligation to incorporate such changes in products of prior manufacture.

There are no warranties, which extend beyond the description on the face hereof. No other express or implied warranties of neither merchantability nor fitness for particular use, whether oral or written, shall apply to the product. GLOBALVIEW BILLIARDS neither assumes, nor authorizes any person to assume on GLOBALVIEW BILLIARDS' behalf, any other obligation or liability in connection with the product.

This guarantee does not apply to damage resulting from transit, moving, abuse, misuse, accident, alteration, climatic conditions, neglect, normal wear and tear, fire, flood, or any other natural calamities, or tables used in a commercial setting.

GLOBALVIEW BILLIARDS' obligation hereunder is void if the table is not installed and serviced by an Authorized GLOBALVIEW BILLIARDS Dealer or Representative.



*To see more about us, check out our  
website:*

[www.gvbilliards.com](http://www.gvbilliards.com)

